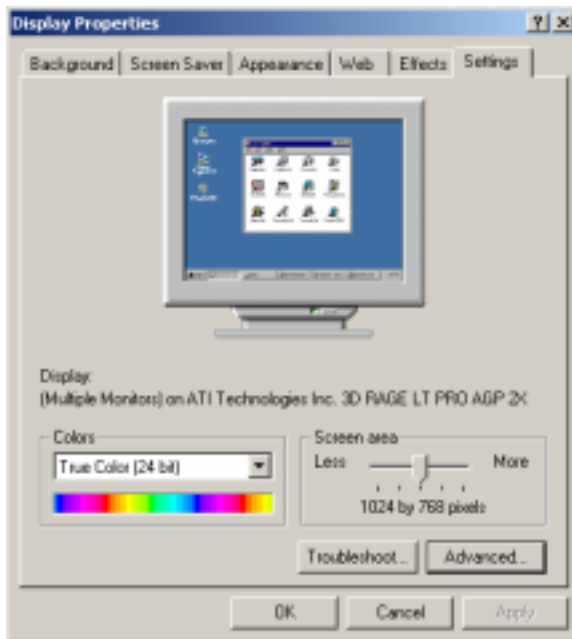




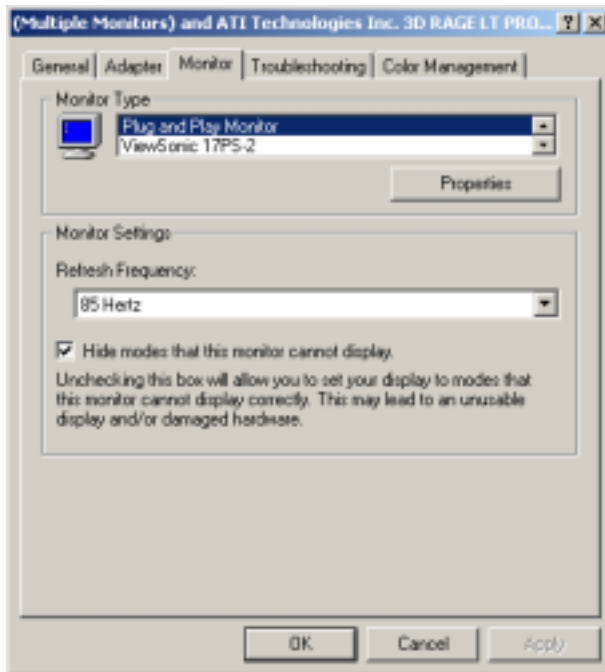
Monitor Driver

1. Download filename: VSINF.EXE, double-click on the filename and it will self extract:
 - a) The INF files (defaults to c:\winnt\inf)
 - b) The ICM files (defaults to c:\winnt\system32\spool\drivers\color)
 - c) Installation should then be complete:
 - d) Restart the computer.

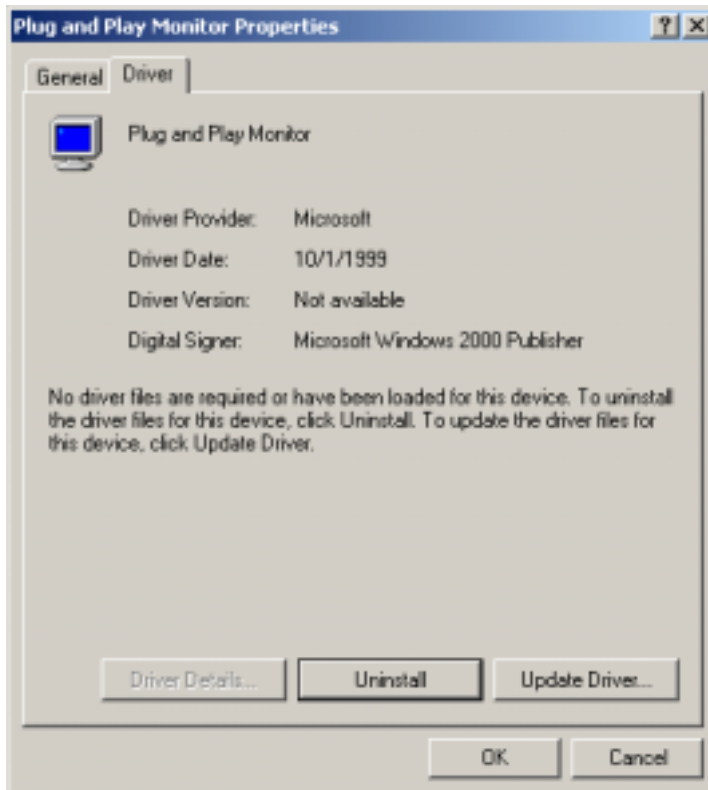
- 2) Click on "Start" -> "Settings" -> "Control Panel" -> "Display" -> "Settings tab" -> "Advanced"



- 3) Click on "Monitor," and click on "Properties"



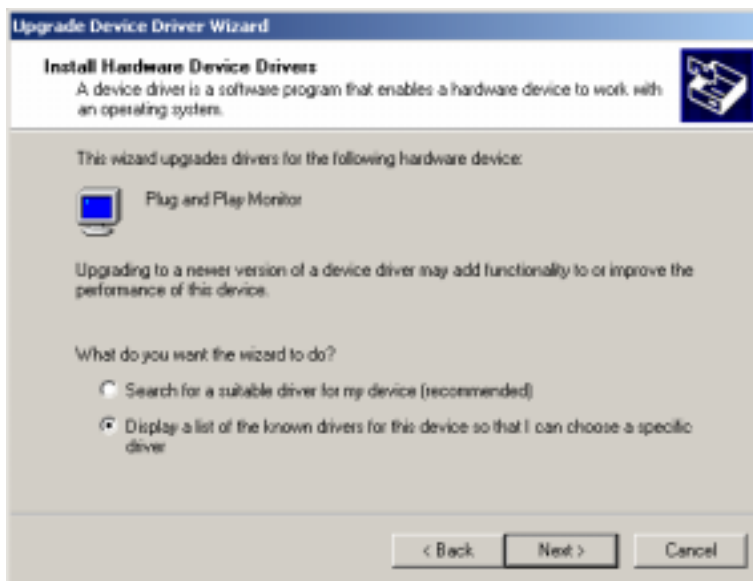
4) Click on "Driver Tab" and click on "Update Driver."



5) Click on Next

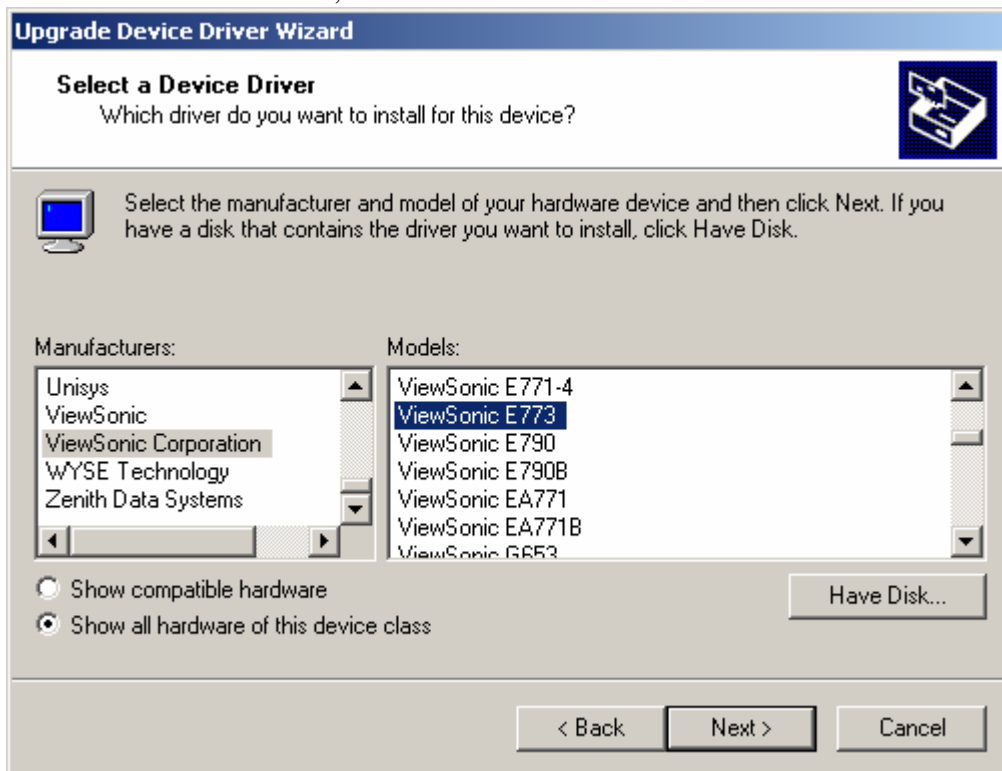


6) Click on “Display a list of all drivers”



7) Click on “Show all hardware of this device class.” Under “Manufacturers & Models,” Select “ViewSonic Corporation” under the Manufacturer. Then, select the appropriate model.

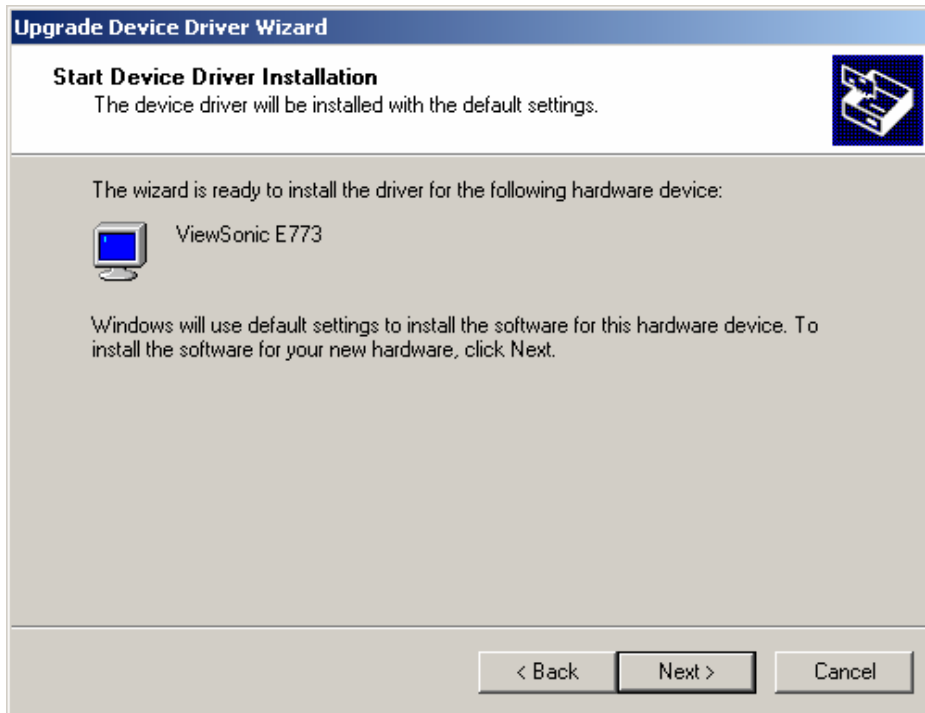
*If the model is not listed, check “ViewSonic” under the Manufacturer.



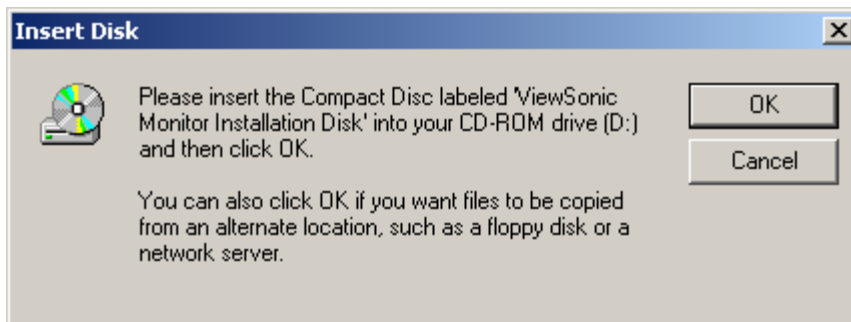
8) The following screen appears. Just click on “Yes,” to continue with the installation. The INF file is Microsoft certified. However, Microsoft did not digitally sign for all of the monitor models. The digitally signed models will be updated as time goes on.



9) Click on “Next.”

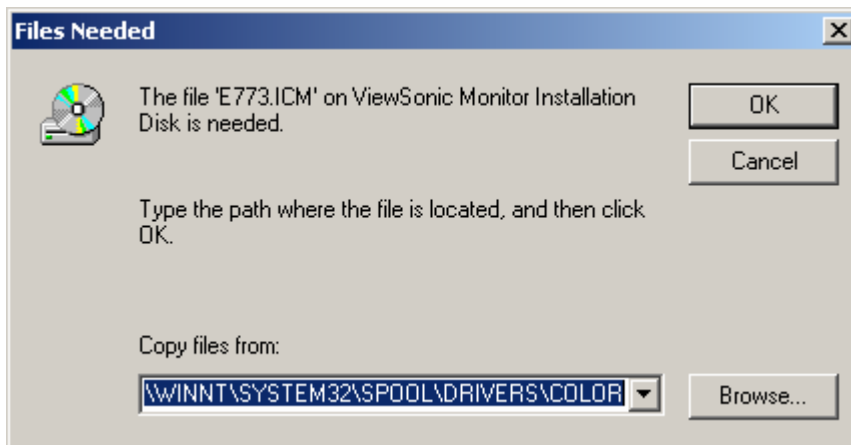


10) The following window appears. There is no need to insert the CD. Please click on “OK.”



11) Type in the following directory: “C:\winnt\system32\spool\drivers\color.” in the Browse box, Then, click on “OK.”

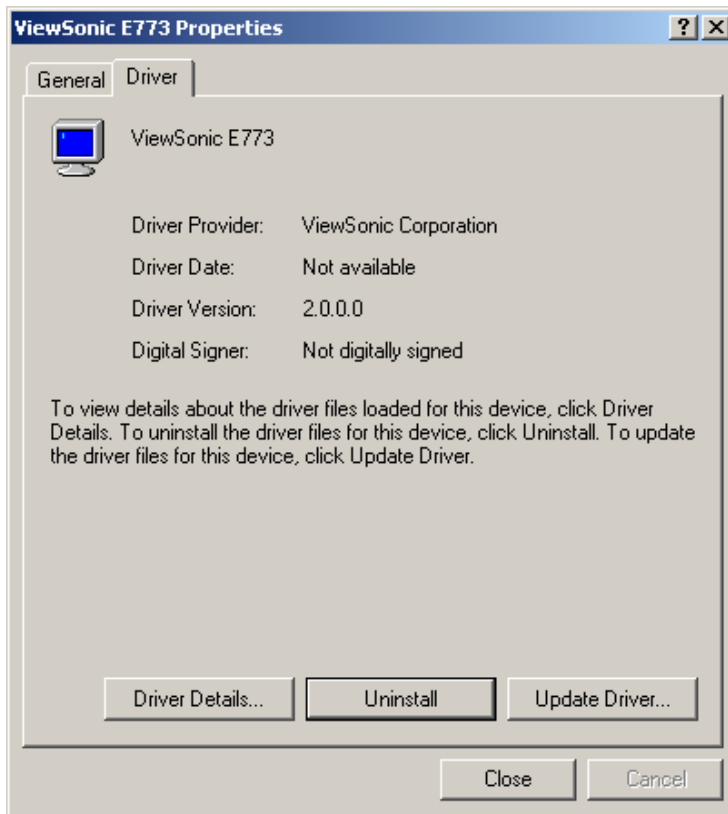
*The directory may be different if Windows was installed at an alternative location.



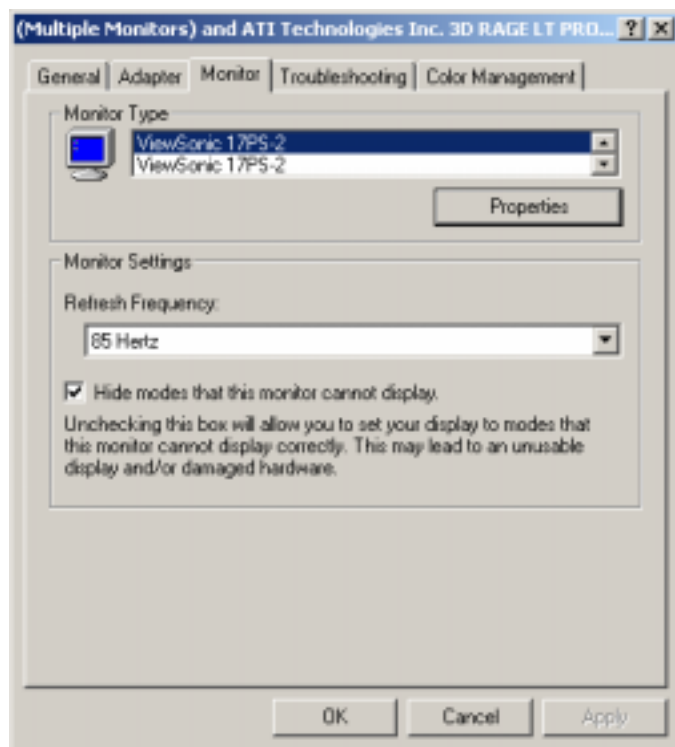
12) Click on “Finish.”



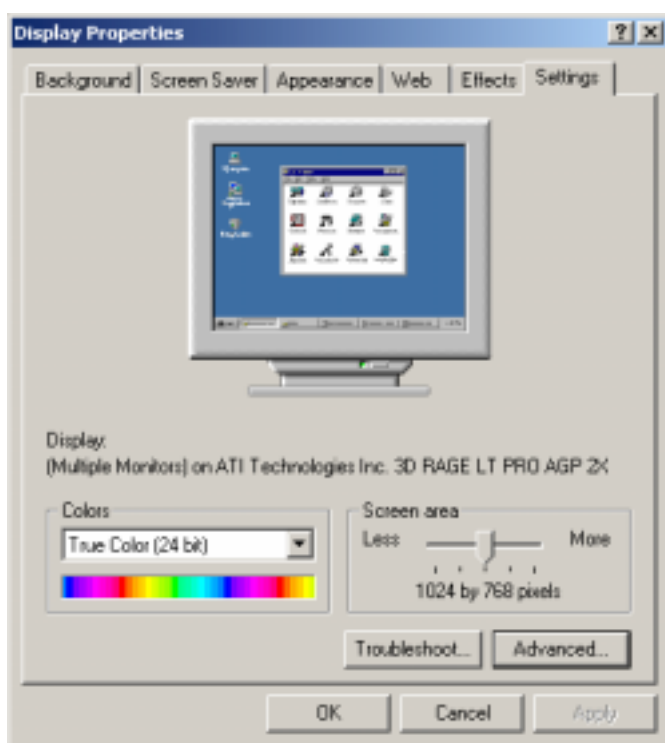
13) The following window appears. Click on “Close.”



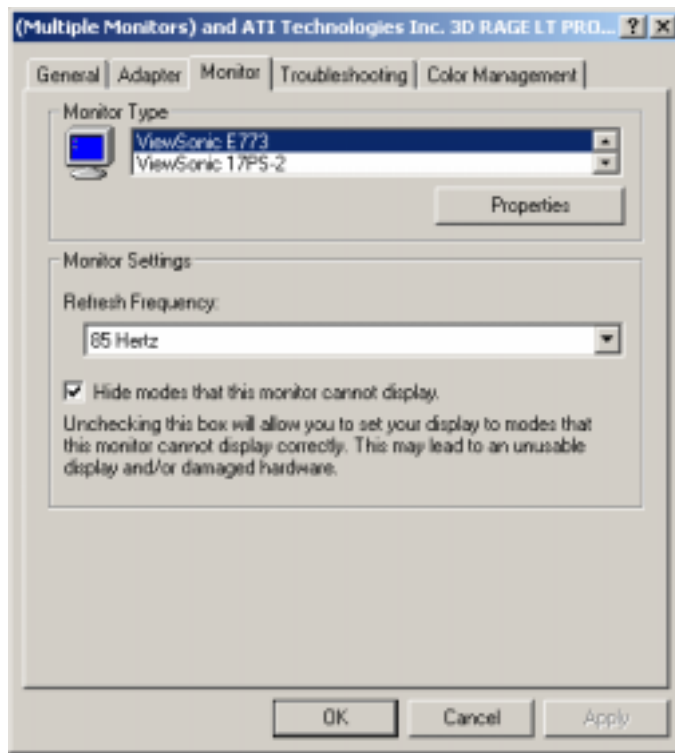
14) When you go back to the Monitor Tab, it doesn't show the new Monitor Model right away. Just click on “OK.”



15) Then, click on "Advanced."



16) And you'll see the updated Monitor Model.



17) Installation is complete. Just click on “OK,” and click on “OK” to exit from Display Properties.

3/27/2001